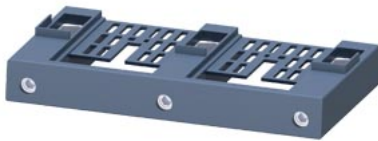


Box terminal block for 3RW55/52 Size 2



product designation	Box terminal block
manufacturer's article number	3RW511, 3RW512 (bottom)
<ul style="list-style-type: none"> • of soft starter • of soft starter • of soft starter 	3RW522 (2x)
	3RW552 (2x)
Substance Prohibitance (Date)	02/15/2018
Ambient conditions	
ambient temperature during storage	-40 ... +80 °C
Certificates/ approvals	
General Product Approval	Declaration of Conformity


[Confirmation](#)


EG-Konf.

Test Certificates**Marine / Shipping**
[Type Test Certificates/Test Report](#)


ABS

BUREAU
VERITAS

LRS



PRS



DNV-GL

other
[Confirmation](#)
Further information

Information- and Downloadcenter (Catalogs, Brochures,...)

<https://www.siemens.com/ic10>

Industry Mall (Online ordering system)

<https://mall.industry.siemens.com/mall/en/en/Catalog/product?mlfb=3RW5982-0TB00>

Cax online generator

<http://support.automation.siemens.com/WWW/CAXorder/default.aspx?lang=en&mlfb=3RW5982-0TB00>

Service&Support (Manuals, Certificates, Characteristics, FAQs,...)



<https://support.industry.siemens.com/cs/ww/en/ps/3RW5982-0TB00>

Image database (product images, 2D dimension drawings, 3D models, device connection diagrams, EPLAN macros...)

http://www.automation.siemens.com/bilddb/cax_de.aspx?mlfb=3RW5982-0TB00&...

Characteristic: Tripping characteristics, I_t, Let-through current

<https://support.industry.siemens.com/cs/ww/en/ps/3RW5982-0TB00/char>

Characteristic: Installation altitude

<http://www.automation.siemens.com/bilddb/index.aspx?view=Search&mlfb=3RW5982-0TB00&objecttype=14&gridview=view1>

Simulation Tool for Soft Starters (STS)

<https://support.industry.siemens.com/cs/ww/en/view/101494917>

last modified:

1/18/2021

