

## Data sheet

## 3RW5558-2HA14



Figure similar

SIRIUS soft starter 200-480 V 1280 A, 110-250 V AC Spring-type terminals

<b>product brand name</b>	SIRIUS
<b>product category</b>	Hybrid switching devices
<b>product designation</b>	Soft starter
<b>product type designation</b>	3RW55
<b>manufacturer's article number</b>	<ul style="list-style-type: none"> <li>• of high feature HMI module usable <a href="#">3RW5980-0HF00</a></li> <li>• of communication module PROFINET standard usable <a href="#">3RW5980-0CS00</a></li> <li>• of communication module PROFINET high-feature usable <a href="#">3RW5950-0CH00</a></li> <li>• of communication module PROFIBUS usable <a href="#">3RW5980-0CP00</a></li> <li>• of communication module Modbus TCP usable <a href="#">3RW5980-0CT00</a></li> <li>• of communication module Modbus RTU usable <a href="#">3RW5980-0CR00</a></li> <li>• of communication module Ethernet/IP <a href="#">3RW5980-0CE00</a></li> <li>• of circuit breaker usable at 400 V <a href="#">3VA2716-7AB05-0AA0; Type of coordination 1, Iq = 65 kA, CLASS 10</a></li> <li>• of circuit breaker usable at 500 V <a href="#">3VA2716-7AB05-0AA0; Type of coordination 1, Iq = 65 kA, CLASS 10</a></li> <li>• of the gG fuse usable up to 690 V 3x3NA3365-6; Type of coordination 1, Iq = 65 kA</li> <li>• of full range R fuse link for semiconductor protection usable up to 690 V <a href="#">3NB3357-1KK26; Type of coordination 2, Iq = 65 kA</a></li> <li>• of back-up R fuse link for semiconductor protection usable up to 690 V 3x3NE3340-8; Type of coordination 2, Iq = 65 kA</li> </ul>
<b>General technical data</b>	
<b>starting voltage [%]</b>	20 ... 100 %
<b>stopping voltage [%]</b>	50 %; non-adjustable
<b>start-up ramp time of soft starter</b>	0 ... 360 s
<b>ramp-down time of soft starter</b>	0 ... 360 s
<b>start torque [%]</b>	10 ... 100 %
<b>stopping torque [%]</b>	10 ... 100 %
<b>torque limitation [%]</b>	20 ... 200 %
<b>current limiting value [%] adjustable</b>	125 ... 800 %
<b>breakaway voltage [%] adjustable</b>	40 ... 100 %
<b>breakaway time adjustable</b>	0 ... 2 s
<b>number of parameter sets</b>	3
<b>accuracy class according to IEC 61557-12</b>	5 %
<b>certificate of suitability</b>	<ul style="list-style-type: none"> <li>• CE marking Yes</li> <li>• UL approval Yes</li> <li>• CSA approval Yes</li> </ul>
<b>product component</b>	



<ul style="list-style-type: none"><li>• HMI-High Feature</li></ul>	Yes
<ul style="list-style-type: none"><li>• is supported HMI-High Feature</li></ul>	Yes
<b>product feature integrated bypass contact system</b>	Yes
<b>number of controlled phases</b>	3
<b>trip class</b>	CLASS 10A / 10E (default) / 20E / 30E; acc. to IEC 60947-4-2
<b>current unbalance limiting value [%]</b>	10 ... 60 %
<b>ground-fault monitoring limiting value [%]</b>	10 ... 95 %
<b>buffering time in the event of power failure</b>	
<ul style="list-style-type: none"><li>• for main current circuit</li></ul>	100 ms
<ul style="list-style-type: none"><li>• for control circuit</li></ul>	100 ms
<b>idle time adjustable</b>	0 ... 255 s
insulation voltage rated value	480 V
<b>degree of pollution</b>	3, acc. to IEC 60947-4-2
<b>impulse voltage rated value</b>	6 kV
<b>blocking voltage of the thyristor maximum</b>	1 400 V
<b>service factor</b>	1.15
<b>surge voltage resistance rated value</b>	6 kV
<b>maximum permissible voltage for safe isolation</b>	
<ul style="list-style-type: none"><li>• between main and auxiliary circuit</li></ul>	480 V; does not apply for thermistor connection
<b>shock resistance</b>	15 g / 11 ms, from 6 g / 11 ms with potential contact lifting
<b>vibration resistance</b>	15 mm up to 6 Hz; 2 g up to 500 Hz
<b>recovery time after overload trip adjustable</b>	60 ... 1 800 s
utilization category according to IEC 60947-4-2	AC 53a
<b>reference code according to IEC 81346-2</b>	Q
<b>Substance Prohibitance (Date)</b>	02/11/2019
<b>product function</b>	
<ul style="list-style-type: none"><li>• ramp-up (soft starting)</li></ul>	Yes
<ul style="list-style-type: none"><li>• ramp-down (soft stop)</li></ul>	Yes
<ul style="list-style-type: none"><li>• breakaway pulse</li></ul>	Yes
<ul style="list-style-type: none"><li>• adjustable current limitation</li></ul>	Yes
<ul style="list-style-type: none"><li>• creep speed in both directions of rotation</li></ul>	Yes
<ul style="list-style-type: none"><li>• pump ramp down</li></ul>	Yes
<ul style="list-style-type: none"><li>• DC braking</li></ul>	Yes
<ul style="list-style-type: none"><li>• motor heating</li></ul>	Yes
<ul style="list-style-type: none"><li>• slave pointer function</li></ul>	Yes
<ul style="list-style-type: none"><li>• trace function</li></ul>	Yes
<ul style="list-style-type: none"><li>• intrinsic device protection</li></ul>	Yes
<ul style="list-style-type: none"><li>• motor overload protection</li></ul>	Yes; Full motor protection (thermistor motor protection and electronic motor overload protection) / When using the motor overload protection according to ATEX, an upstream contactor is required in inside-delta circuit.
<ul style="list-style-type: none"><li>• evaluation of thermistor motor protection</li></ul>	Yes; Type A PTC or Klixon / Thermoclick
<ul style="list-style-type: none"><li>• inside-delta circuit</li></ul>	Yes
<ul style="list-style-type: none"><li>• auto-RESET</li></ul>	Yes
<ul style="list-style-type: none"><li>• manual RESET</li></ul>	Yes
<ul style="list-style-type: none"><li>• remote reset</li></ul>	Yes
<ul style="list-style-type: none"><li>• communication function</li></ul>	Yes
<ul style="list-style-type: none"><li>• operating measured value display</li></ul>	Yes
<ul style="list-style-type: none"><li>• event list</li></ul>	Yes
<ul style="list-style-type: none"><li>• error logbook</li></ul>	Yes
<ul style="list-style-type: none"><li>• via software parameterizable</li></ul>	Yes
<ul style="list-style-type: none"><li>• via software configurable</li></ul>	Yes
<ul style="list-style-type: none"><li>• screw terminal</li></ul>	No
<ul style="list-style-type: none"><li>• spring-loaded terminal</li></ul>	Yes
<ul style="list-style-type: none"><li>• <b>PROFinergy</b></li></ul>	Yes; in connection with the PROFINET Standard and PROFINET High-Feature communication modules
<ul style="list-style-type: none"><li>• <b>firmware update</b></li></ul>	Yes
<ul style="list-style-type: none"><li>• <b>removable terminal for control circuit</b></li></ul>	Yes
<ul style="list-style-type: none"><li>• voltage ramp</li></ul>	Yes
<ul style="list-style-type: none"><li>• torque control</li></ul>	Yes
<ul style="list-style-type: none"><li>• combined braking</li></ul>	Yes



- analog output
- programmable control inputs/outputs
- condition monitoring
- automatic parameterisation
- application wizards
- alternative run-down
- emergency operation mode
- reversing operation
- soft starting at heavy starting conditions

Yes; 4 ... 20 mA (dependent on ... 10 V)  
 Yes  
 Yes  
 Yes  
 Yes  
 Yes  
 Yes  
 Yes  
 Yes

Power Electronics	
<b>operational current</b>	
• at 40 °C rated value	1 280 A
• at 40 °C rated value minimum	256 A
• at 50 °C rated value	1 139 A
• at 60 °C rated value	1 030 A
<b>operational current at inside-delta circuit</b>	
• at 40 °C rated value	2 217 A
• at 50 °C rated value	1 973 A
• at 60 °C rated value	1 784 A
<b>operating voltage</b>	
• rated value	200 ... 480 V
• at inside-delta circuit rated value	200 ... 480 V
<b>relative negative tolerance of the operating voltage</b>	-15 %
<b>relative positive tolerance of the operating voltage</b>	10 %
<b>relative negative tolerance of the operating voltage at inside-delta circuit</b>	-15 %
<b>relative positive tolerance of the operating voltage at inside-delta circuit</b>	10 %
<b>operating power for 3-phase motors</b>	
• at 230 V at 40 °C rated value	400 kW
• at 230 V at inside-delta circuit at 40 °C rated value	710 kW
• at 400 V at 40 °C rated value	710 kW
• at 400 V at inside-delta circuit at 40 °C rated value	1 200 kW
<b>Operating frequency 1 rated value</b>	50 Hz
<b>Operating frequency 2 rated value</b>	60 Hz
<b>relative negative tolerance of the operating frequency</b>	-10 %
<b>relative positive tolerance of the operating frequency</b>	10 %
<b>minimum load [%]</b>	10 %; Relative to set le
<b>power loss [W] for rated value of the current at AC</b>	
• at 40 °C after startup	384 W
• at 50 °C after startup	337 W
• at 60 °C after startup	275 W
<b>power loss [W] at AC at current limitation 350 %</b>	
• at 40 °C during startup	23 279 W
• at 50 °C during startup	19 496 W
• at 60 °C during startup	16 778 W
<b>type of the motor protection</b>	Electronic, tripping in the event of thermal overload of the motor
Control circuit/ Control	
<b>type of voltage of the control supply voltage</b>	AC
<b>control supply voltage at AC</b>	
• at 50 Hz	110 ... 250 V
• at 60 Hz	110 ... 250 V
<b>relative negative tolerance of the control supply voltage at AC at 50 Hz</b>	-15 %
<b>relative positive tolerance of the control supply voltage at AC at 50 Hz</b>	10 %
<b>relative negative tolerance of the control supply voltage at AC at 60 Hz</b>	-15 %
<b>relative positive tolerance of the control supply voltage at AC at 60 Hz</b>	10 %
<b>control supply voltage frequency</b>	50 ... 60 Hz



relative negative tolerance of the control supply voltage frequency	-10 %
relative positive tolerance of the control supply voltage frequency	10 %
control supply current in standby mode rated value	100 mA
holding current in bypass operation rated value	210 mA
locked-rotor current at close of bypass contact maximum	1 A
inrush current peak at application of control supply voltage maximum	44 A
duration of inrush current peak at application of control supply voltage	1.7 ms
design of the overvoltage protection	Varistor
design of short-circuit protection for control circuit	4 A gG fuse (I <sub>cu</sub> =1 kA), 6 A quick-acting fuse (I <sub>cu</sub> =1 kA), C1 miniature circuit breaker (I <sub>cu</sub> = 600 A), C6 miniature circuit breaker (I <sub>cu</sub> = 300 A); Is not part of scope of supply

Inputs/ Outputs	
number of digital inputs	4
• parameterizable	4
• number of digital outputs	4
• number of digital outputs parameterizable	3
• number of digital outputs not parameterizable	1
digital output version	3 normally-open contacts (NO) / 1 changeover contact (CO)
number of analog outputs	1
switching capacity current of the relay outputs	
• at AC-15 at 250 V rated value	3 A
• at DC-13 at 24 V rated value	1 A

Installation/ mounting/ dimensions	
mounting position	Vertical (can be rotated +/- 90° and tilted forward or backward +/- 22.5°)
fastening method	screw fixing
height	764 mm
width	478 mm
depth	241 mm
required spacing with side-by-side mounting	
• forwards	10 mm
• backwards	0 mm
• upwards	100 mm
• downwards	75 mm
• at the side	5 mm
weight without packaging	61 kg

Connections/ Terminals	
type of electrical connection	
• for main current circuit	busbar connection
• for control circuit	spring-loaded terminals
width of connection bar maximum	55 mm
wire length for thermistor connection	
• with conductor cross-section = 0.5 mm <sup>2</sup> maximum	50 m
• with conductor cross-section = 1.5 mm <sup>2</sup> maximum	150 m
• with conductor cross-section = 2.5 mm <sup>2</sup> maximum	250 m
type of connectable conductor cross-sections	
• for DIN cable lug for main contacts stranded	2x (50 ... 240 mm <sup>2</sup> )
• for DIN cable lug for main contacts finely stranded	2x (70 ... 240 mm <sup>2</sup> )
type of connectable conductor cross-sections	
• for control circuit solid	2x (0.25 ... 1.5 mm <sup>2</sup> )
• for control circuit finely stranded with core end processing	2x (0.25 ... 1.5 mm <sup>2</sup> )
• at AWG cables for control circuit solid	2x (24 ... 16)
• at AWG cables for control circuit finely stranded with core end processing	2x (24 ... 16)
wire length	
• between soft starter and motor maximum	800 m
• at the digital inputs at DC maximum	1 000 m



<b>tightening torque</b>	
<ul style="list-style-type: none"> <li>for main contacts with screw-type terminals</li> <li>for auxiliary and control contacts with screw-type terminals</li> </ul>	20 ... 35 N·m 0.8 ... 1.2 N·m
<b>tightening torque [lbf·in]</b>	
<ul style="list-style-type: none"> <li>for main contacts with screw-type terminals</li> <li>for auxiliary and control contacts with screw-type terminals</li> </ul>	177 ... 310 lbf·in 7 ... 10.3 lbf·in
<b>Ambient conditions</b>	
installation altitude at height above sea level maximum	5 000 m; Derating as of 1000 m, see catalog
<b>ambient temperature</b>	
<ul style="list-style-type: none"> <li>during operation</li> <li>during storage and transport</li> </ul>	-25 ... +60 °C; Please observe derating at temperatures of 40 °C or above -40 ... +80 °C
<b>environmental category</b>	
<ul style="list-style-type: none"> <li>during operation according to IEC 60721</li> <li>during storage according to IEC 60721</li> <li>during transport according to IEC 60721</li> </ul>	3K6 (no ice formation, only occasional condensation), 3C3 (no salt mist), 3S2 (sand must not get into the devices), 3M6 1K6 (only occasional condensation), 1C2 (no salt mist), 1S2 (sand must not get inside the devices), 1M4 2K2, 2C1, 2S1, 2M2 (max. fall height 0.3 m)
<b>EMC emitted interference</b>	acc. to IEC 60947-4-2: Class A
<b>Communication/ Protocol</b>	
<b>communication module is supported</b>	
<ul style="list-style-type: none"> <li>PROFINET standard</li> <li>PROFINET high-feature</li> <li>EtherNet/IP</li> <li>Modbus RTU</li> <li>Modbus TCP</li> <li>PROFIBUS</li> </ul>	Yes Yes Yes Yes Yes Yes
<b>UL/CSA ratings</b>	
<b>manufacturer's article number</b>	
<ul style="list-style-type: none"> <li>of the fuse <ul style="list-style-type: none"> <li>usable for Standard Faults up to 575/600 V according to UL</li> <li>usable for High Faults up to 575/600 V according to UL</li> <li>usable for Standard Faults at inside-delta circuit up to 575/600 V according to UL</li> <li>usable for High Faults at inside-delta circuit up to 575/600 V according to UL</li> </ul> </li> </ul>	Type: Class J / L, max. 3000 A; Iq = 85 kA Type: Class J / L, max. 3000 A; Iq = 100 kA Type: Class J / L, max. 3000 A; Iq = 85 kA Type: Class J / L, max. 3000 A; Iq = 100 kA
<b>operating power [hp] for 3-phase motors</b>	
<ul style="list-style-type: none"> <li>at 200/208 V at 50 °C rated value</li> <li>at 220/230 V at 50 °C rated value</li> <li>at 460/480 V at 50 °C rated value</li> <li>at 200/208 V at inside-delta circuit at 50 °C rated value</li> <li>at 220/230 V at inside-delta circuit at 50 °C rated value</li> <li>at 460/480 V at inside-delta circuit at 50 °C rated value</li> </ul>	400 hp 450 hp 1 000 hp 700 hp 850 hp 1 700 hp
<b>contact rating of auxiliary contacts according to UL</b>	R300-B300
<b>Safety related data</b>	
<b>protection class IP on the front according to IEC 60529</b>	IP00
<b>electromagnetic compatibility</b>	acc. to IEC 60947-4-2
<b>ATEX</b>	
<b>certificate of suitability</b>	
<ul style="list-style-type: none"> <li>ATEX</li> <li>IECEX</li> <li>according to ATEX directive 2014/34/EU</li> </ul>	Yes Yes BVS 18 ATEX F 003 X
<b>type of protection according to ATEX directive 2014/34/EU</b>	II (2)G [Ex eb Gb] [Ex db Gb] [Ex pxb Gb], II (2)D [Ex tb Db] [Ex pxb Db], I (M2) [Ex db Mb]
<b>hardware fault tolerance according to IEC 61508</b>	0



relating to ATEX	
PFDAvg with low demand rate according to IEC 61508 relating to ATEX	0.008
PFHD with high demand rate according to EN 62061 relating to ATEX	5E-7 1/h
Safety Integrity Level (SIL) according to IEC 61508 relating to ATEX	SIL1
T1 value for proof test interval or service life according to IEC 61508 relating to ATEX	3 s

#### Certificates/ approvals

General Product Approval	EMC
--------------------------	-----



[Confirmation](#)



For use in hazardous locations	Declaration of Conformity	Test Certificates	Marine / Shipping
--------------------------------	---------------------------	-------------------	-------------------



[Type Test Certificates/Test Report](#)



Marine / Shipping	other
-------------------	-------



[Confirmation](#)

#### Further information

Information- and Downloadcenter (Catalogs, Brochures,...)

<https://www.siemens.com/ic10>

Industry Mall (Online ordering system)

<https://mall.industry.siemens.com/mall/en/en/Catalog/product?mlfb=3RW5558-2HA14>

Cax online generator

<http://support.automation.siemens.com/WW/CAXorder/default.aspx?lang=en&mlfb=3RW5558-2HA14>

Service&Support (Manuals, Certificates, Characteristics, FAQs,...)

<https://support.industry.siemens.com/cs/ww/en/ps/3RW5558-2HA14>

Image database (product images, 2D dimension drawings, 3D models, device circuit diagrams, EPLAN macros, ...)

[http://www.automation.siemens.com/bilddb/cax\\_de.aspx?mlfb=3RW5558-2HA14&lang=en](http://www.automation.siemens.com/bilddb/cax_de.aspx?mlfb=3RW5558-2HA14&lang=en)

Characteristic: Tripping characteristics, I<sup>2</sup>t, Let-through current

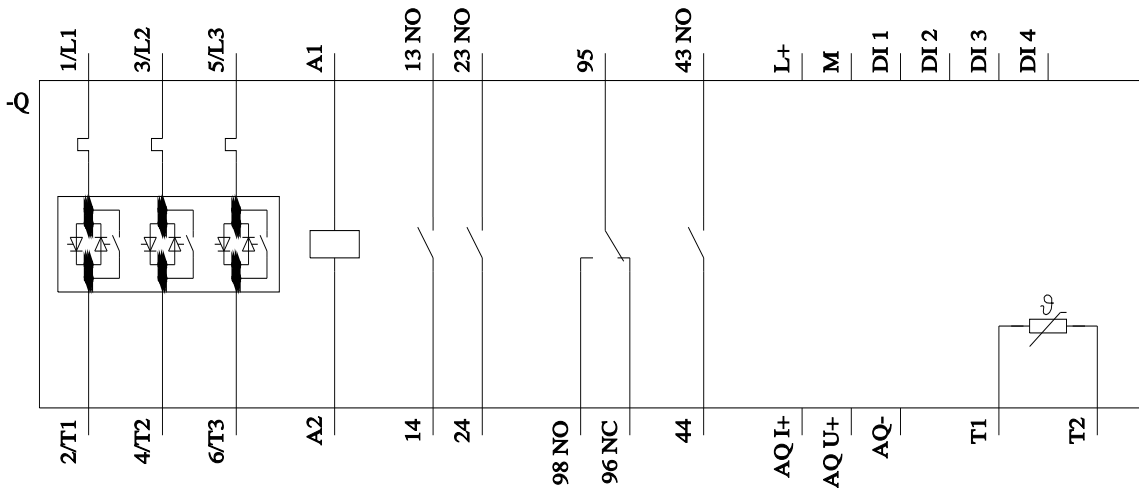
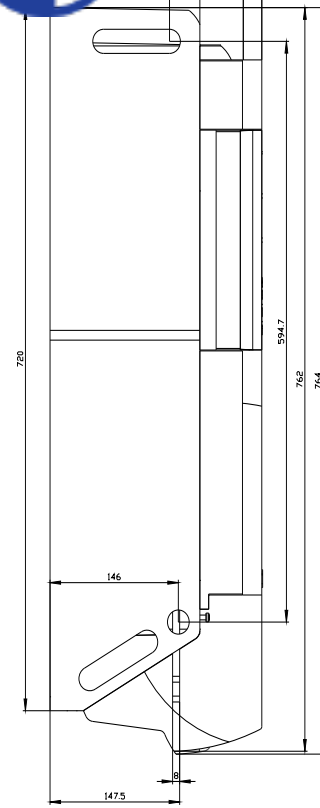
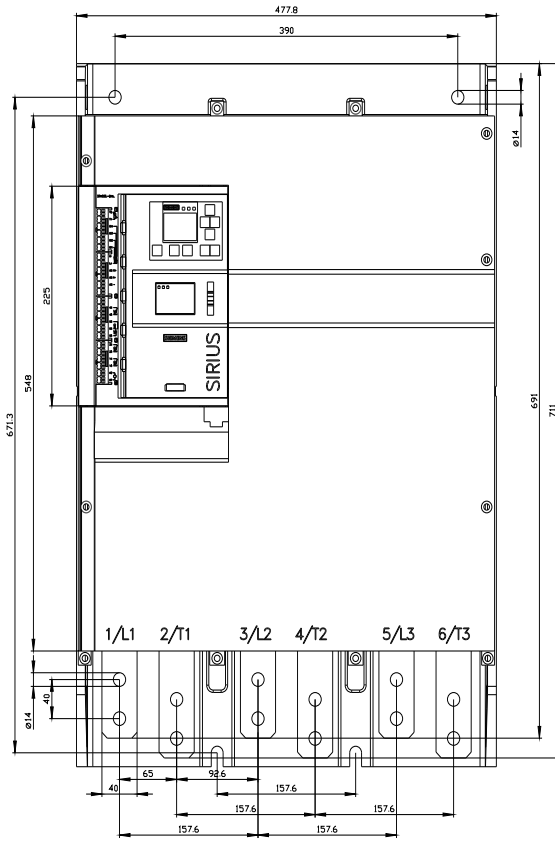
<https://support.industry.siemens.com/cs/ww/en/ps/3RW5558-2HA14/char>

Characteristic: Installation altitude

<http://www.automation.siemens.com/bilddb/index.aspx?view=Search&mlfb=3RW5558-2HA14&objecttype=14&gridview=view1>

Simulation Tool for Soft Starters (STS)

<https://support.industry.siemens.com/cs/ww/en/view/101494917>







last modified:

5/13/2022 

